

9. COLLEGE POLICIES

INTRODUCTION

The following statements of policy establish the terms by which the College adopts the basic parts of the Campus Master Plan: the Long-Range Plan, the Built Systems, the Natural Systems, and the Process for implementing and managing the Plan.

These policies form the broad value system adopted by the Trustees and support the more detailed and variable principles and recommendations outlined in the Plan. Thus, the Policies give tangible authority to the provisions of the Campus Master Plan.

POLICIES

Policy #1:

Mission and Goals

The College acknowledges the importance of the relationship between the campus environment and the academic mission of the institution, as well as the relationship to the surrounding community. To achieve this, the College endorses and affirms the ten goals articulated by the Master Plan Committee:

- 1. *Promote Sustainability in all College Operations*
- 2. *Enhance Middlebury's Relationship to the Landscape*
- 3. *Reinforce the Campus's Architectural Character and Scale*
- 4. *Promote an Accessible Pedestrian-friendly Campus*
- 5. *Improve the Relationship between Town and College*
- 6. *Increase the Variety of Campus Open Spaces*
- 7. *Optimize Campus Circulation*
- 8. *Foster the Twelve-month Campus*
- 9. *Clarify the Distribution of Campus Functions*
- 10. *Establish Connectivity between Campus Areas*

Policy #2:

Community and Resources

The College will support a compact, resource-efficient campus community through endorsement of the Campus Master Plan and its constituent elements.

Policy #3:

Civic Structure

The existing pattern of quadrangles and open spaces will be preserved, enhanced, and extended. These spaces will be kept free of buildings and surface parking. This landscape sequence forms the anatomy of the campus, and will be reinforced and further defined by buildings.

Policy #4:

Green Reserve

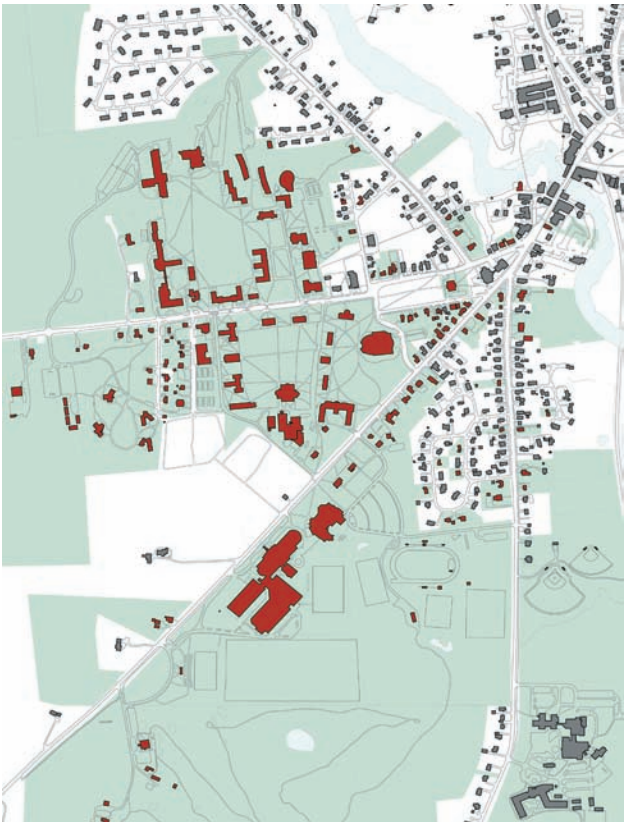
The College will protect existing open spaces by adopting a permanent Green Reserve as identified in the Campus Master Plan. The Green Reserve will be differentiated into two zones: the first within the central campus and in areas of particular environmental sensitivity, where new buildings

FIGURE 1

Plan of Middlebury College property

LEGEND

- Middlebury College Property
- Middlebury College Buildings



are not permitted, and the second in the outlying athletic, farmland, and wooded areas, where any buildings should be directly related to the land use, and be rural or agricultural in nature.

Policy #5:

Circulation and Parking

The College supports the concept of a pedestrian-oriented campus and the gradual reduction of on-campus surface parking. Private cars will generally be limited to the periphery of the campus, and buses, bicycles, and service vehicles will conform to the routes indicated in the Plan.

Policy #6:

Universal Accessibility

The College acknowledges the importance of universal accessibility, and will develop a plan for achievement.

Policy #7:

Community Interface

Middlebury College and the Town have an interdependent relationship. The College acknowledges the importance of this relationship and will cooperate in joint initiatives to enhance it. This is especially important regarding the Plan's recommendations for College Street and South Main Street.

Policy #8:

Landscape

The College acknowledges the importance of the campus landscape as a resource, as an element of civic structure, as an ecological system, and as a teaching laboratory. The College will develop a proactive landscape development program that is resource-efficient and regionally consistent.

Policy #9:

Architecture

The quality of architecture is a public statement of the College's aspirations to excellence, and a permanent expression of commitment to the quality of the public realm in which education occurs. Therefore the College will support the Architectural Plan and Principles of the Master Plan.

Policy #10:

Sustainability

The College has a history of commitment to environmental responsibility, and has committed to achieving carbon neu-

trality by 2016. The College will further this commitment by increasing its capacity for resource management and measurement as outlined in the Campus Master Plan.

Policy #11:

Planning

The College will seek to establish and nurture a cooperative culture of planning on campus. As part of the development of this new planning culture, the College may develop specific District Plans and Building Siting Studies from time to time in order to expand the Campus Master Plan and to guide decision making.

Policy #12:

Process

The College will seek to expand and augment current management systems in order to implement, monitor, and achieve the Campus Master Plan and its Policies. This includes the establishment of a Master Planning Committee to facilitate the implementation and monitoring of the Plan.

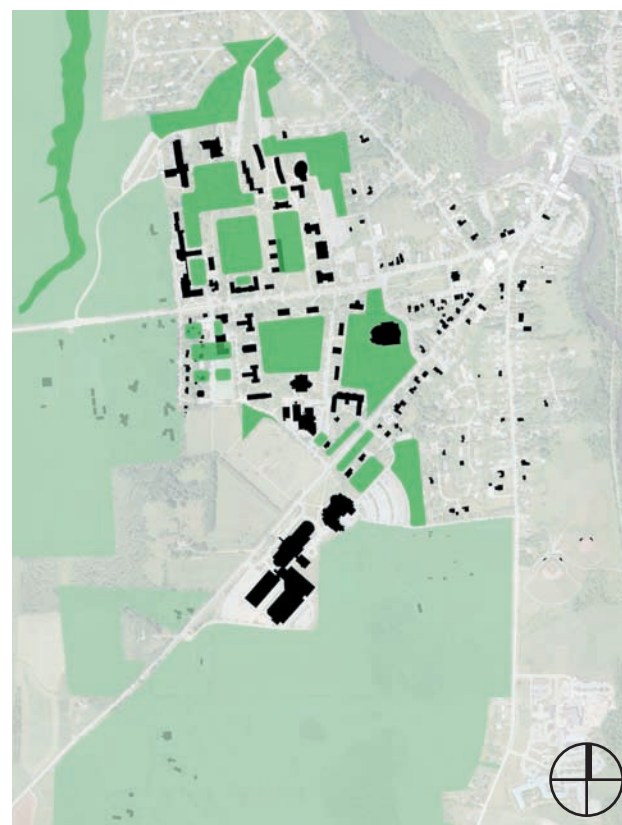


FIGURE 2

Middlebury College Green Reserve

LEGEND

- Zone 1
- Zone 2